



Product Service

# CERTIFICATE

No. Z2 17 12 84700 055

**Holder of Certificate:** Phono Solar Technology Co., Ltd

No. 1 Xinghuo Rd.,  
Nanjing Hi-tech Zone,  
210032 Nanjing  
PEOPLE'S REPUBLIC OF CHINA



**Certification Mark:**



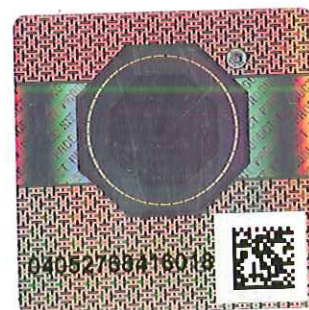
**Product:**

Crystalline Silicon Terrestrial Photovoltaic (PV) Modules  
Mono-Crystalline Silicon Photovoltaic Module

The product was tested on a voluntary basis and complies with the essential requirements. The certification mark shown above can be affixed on the product. It is not permitted to alter the certification mark in any way. In addition the certification holder must not transfer the certificate to third parties. See also notes overleaf.

Test report no.: 704061357401-04

Valid until: 2022-12-04



Date, 2017-12-08

( Zhulin Zhang )

Page 1 of 3



Product Service

**CERTIFICATE**

No. Z2 17 12 84700 055

**Model(s):**

PS280M-24/T, PS285M-24/T, PS290M-24/T, PS295M-24/T,  
 PS300M-24/T, PS305M-24/T, PS310M-24/T, PS315M-24/T,  
 PS320M-24/T, PS325M-24/T, PS330M-24/T, PS335M-24/T,  
 PS340M-24/T, PS345M-24/T, PS350M-24/T, PS355M-24/T,  
 PS360M-24/T, PS365M-24/T, PS370M-24/T, PS375M-24/T,  
 PS380M-24/T, PS255M-22/W, PS260M-22/W, PS265M-22/W,  
 PS270M-22/W, PS275M-22/W, PS280M-22/W, PS285M-22/W,  
 PS290M-22/W, PS295M-22/W, PS300M-22/W, PS305M-22/W,  
 PS310M-22/W, PS315M-22/W, PS320M-22/W, PS325M-22/W,  
 PS330M-22/W, PS335M-22/W, PS340M-22/W, PS345M-22/W,  
 PS350M-22/W, PS215M-20/U, PS220M-20/U, PS225M-20/U,  
 PS230M-20/U, PS235M-20/U, PS240M-20/U, PS245M-20/U,  
 PS250M-20/U, PS255M-20/U, PS260M-20/U, PS265M-20/U,  
 PS270M-20/U, PS275M-20/U, PS280M-20/U, PS285M-20/U,  
 PS290M-20/U, PS295M-20/U, PS300M-20/U, PS305M-20/U,  
 PS310M-20/U, PS315M-20/U, PS195M-18/V, PS200M-18/V,  
 PS205M-18/V, PS210M-18/V, PS215M-18/V, PS220M-18/V,  
 PS225M-18/V, PS230M-18/V, PS235M-18/V, PS240M-18/V,  
 PS245M-18/V, PS250M-18/V, PS255M-18/V, PS260M-18/V,  
 PS265M-18/V, PS270M-18/V, PS275M-18/V, PS280M-18/V,  
 PS285M-18/V, PS130M-12/G, PS135M-12/G, PS140M-12/G,  
 PS145M-12/G, PS150M-12/G, PS155M-12/G, PS160M-12/G,  
 PS165M-12/G, PS170M-12/G, PS175M-12/G, PS180M-12/G,  
 PS185M-12/G, PS190M-12/G, PS170M-24/F, PS175M-24/F,  
 PS180M-24/F, PS185M-24/F, PS190M-24/F, PS195M-24/F,  
 PS200M-24/F, PS205M-24/F, PS210M-24/F, PS85M-12/D,  
 PS90M-12/D, PS95M-12/D, PS100M-12/D, PS105M-12/D,  
 PS90M-12/H, PS95M-12/H, PS100M-12/H, PS105M-12/H,  
 PS90M-7/J, PS95M-7/J, PS100M-7/J, PS70M-5/J,  
 PS75M-5/J, PS80M-5/J.

**Parameters:**

Rated Output Power at STC:	See the attachment
Construction:	Framed, with Junction box, Cable and Connectors.
Test Laboratory:	Yangzhou Opto-Electrical Products Testing Institute No.10 West Kaifa Road, Yangzhou, 225009 Jiangsu, P. R. China
Application Class:	Class A
Maximum System Voltage:	1000 V DC
Fire safety Class:	Class C

**Tested according to:**

IEC 61215(ed.2)  
 IEC 61730-1(ed.1);am1;am2  
 IEC 61730-2(ed.1);am1

**Production Facility(ies):**

84700, 98336, 90968

Page 2 of 3

**CERTIFICATE**  
**No. Z2 17 12 84700 055**



Product Service

The following models will be covered by above certificate:

Model	Rated Output Power at STC
PS280M-24/T, PS285M-24/T, PS290M-24/T, PS295M-24/T, PS300M-24/T, PS305M-24/T, PS310M-24/T, PS315M-24/T, PS320M-24/T, PS325M-24/T, PS330M-24/T, PS335M-24/T, PS340M-24/T, PS345M-24/T, PS350M-24/T, PS355M-24/T, PS360M-24/T, PS365M-24/T, PS370M-24/T, PS375M-24/T, PS380M-24/T,	280W, 285W, 290W, 295W, 300W, 305W, 310W, 315W, 320W, 325W, 330W, 335W, 340W, 345W, 350W, 355W, 360W, 365W, 370W, 375W, 380W,
PS255M-22/W, PS260M-22/W, PS265M-22/W, PS270M-22/W, PS275M-22/W, PS280M-22/W, PS285M-22/W, PS290M-22/W, PS295M-22/W, PS300M-22/W, PS305M-22/W, PS310M-22/W, PS315M-22/W, PS320M-22/W, PS325M-22/W, PS330M-22/W, PS335M-22/W, PS340M-22/W, PS345M-22/W, PS350M-22/W,	255W, 260W, 265W, 270W, 275W, 280W, 285W, 290W, 295W, 300W, 305W, 310W, 315W, 320W, 325W, 330W, 335W, 340W, 345W, 350W,
PS215M-20/U, PS220M-20/U, PS225M-20/U, PS230M-20/U, PS235M-20/U, PS240M-20/U, PS245M-20/U, PS250M-20/U, PS255M-20/U, PS260M-20/U, PS265M-20/U, PS270M-20/U, PS275M-20/U, PS280M-20/U, PS285M-20/U, PS290M-20/U, PS295M-20/U, PS300M-20/U, PS305M-20/U, PS310M-20/U, PS315M-20/U,	215W, 220W, 225W, 230W, 235W, 240W, 245W, 250W, 255W, 260W, 265W, 270W, 275W, 280W, 285W, 290W, 295W, 300W, 305W, 310W, 315W,
PS195M-18/V, PS200M-18/V, PS205M-18/V, PS210M-18/V, PS215M-18/V, PS220M-18/V, PS225M-18/V, PS230M-18/V, PS235M-18/V, PS240M-18/V, PS245M-18/V, PS250M-18/V, PS255M-18/V, PS260M-18/V, PS265M-18/V, PS270M-18/V, PS275M-18/V, PS280M-18/V, PS285M-18/V,	195W, 200W, 205W, 210W, 215W, 220W, 225W, 230W, 235W, 240W, 245W, 250W, 255W, 260W, 265W, 270W, 275W, 280W, 285W,
PS130M-12/G, PS135M-12/G, PS140M-12/G, PS145M-12/G, PS150M-12/G, PS155M-12/G, PS160M-12/G, PS165M-12/G, PS170M-12/G, PS175M-12/G, PS180M-12/G, PS185M-12/G, PS190M-12/G	130W, 135W, 140W, 145W, 150W, 155W, 160W, 165W, 170W, 175W, 180W, 185W, 190W
PS170M-24/F, PS175M-24/F, PS180M-24/F, PS185M-24/F, PS190M-24/F, PS195M-24/F, PS200M-24/F, PS205M-24/F, PS210M-24/F,	170W, 175W, 180W, 185W, 190W, 195W, 200W, 205W, 210W,
PS85M-12/D, PS90M-12/D, PS95M-12/D, PS100M-12/D, PS105M-12/D,	85W, 90W, 95W, 100W, 105W,
PS90M-12/H, PS95M-12/H, PS100M-12/H, PS105M-12/H	90W, 95W, 100W, 105W
PS90M-7/J, PS95M-7/J, PS100M-7/J	90W, 95W, 100W
PS70M-5/J, PS75M-5/J, PS80M-5/J	70W, 75W, 80W



China

TUV SUD Certification and Testing (China) Co., Ltd. Shanghai Branch  
No. 151 Heng Tong Road, Shanghai 200 070, P.R. China

Choose certainty.  
Add value.

**Subject: Your TÜV SÜD certificate(s)**

Dear Phono Solar Technology Co., Ltd

We are pleased to send you your below listed certificate(s), which entitle you to label your certified product(s) with the respective certification mark.

<u>Certificate No.</u>	<u>Product</u>	<u>Model</u>	<u>Annual License Fee Units</u>
22.17.12.84700.055	Crystalline Silicon Terrestrial Photovoltaic (PV) Modules	As on certificate	10

Further, we like to remind you on following information, which are applicable to all certificate holders:

- If the products listed on the certificate will be exported to European Market, the name of the certificate holder and the name and address of the importer or authorized representative based within the European Economic Area should be clearly printed on the product and in the user manual, or where that is not possible, on the packaging and user manual.
- To ensure that the validity of the certificate is not jeopardized, please inform us about any change in your production or of the product itself (this also includes changes to the user manual or rating label)
- If you want to stop the renewal of the above listed certificate(s) for the following year, please inform TÜV SÜD in writing by September 30 of the current year. If not, the annual fee of the following year is to be paid and the cancellation will be done the year after.
  - Meanwhile, the certificate Z2.17.03.84700.040 was replaced. We must ask you to return the original certificate.
- Further, please refer to the global "Testing and Certification Regulations" of TÜV SÜD, which can be downloaded from: <http://www.tuv-sud.cn/terms-and-conditions.html>

If you have any question regarding your certificate(s) or the proper use of the certification mark on your products, please do not hesitate to contact us.

Yours sincerely

Nadine Liu  
 Customer Service  
 TÜV SUD Certification and Testing (China) Co., Ltd. Shanghai Branch  
 PV Department



GON\_TPS\_F\_00.xx - Rev. DRAFT

HSBC Bank (China) Company Limited Shanghai Branch  
Account No. (RMB): 088303235011  
Account No. (USD): 001622349055  
Account No. (EUR): 001622349056  
SWIFT Code: HSBCCN5H

Managing Director of  
Central Region:  
Mr. Sun Jian

Telephone: +86 21 6141 0123  
Telefax: +86 21 6140 8600  
[www.tuv-sud.cn](http://www.tuv-sud.cn)



TÜV SÜD Certification and Testing (China) Co., Ltd. Shanghai Branch  
No. 151 Heng Tong Road  
Shanghai 200 070  
P.R. China